

# The Opioid Epidemic in Philadelphia

---

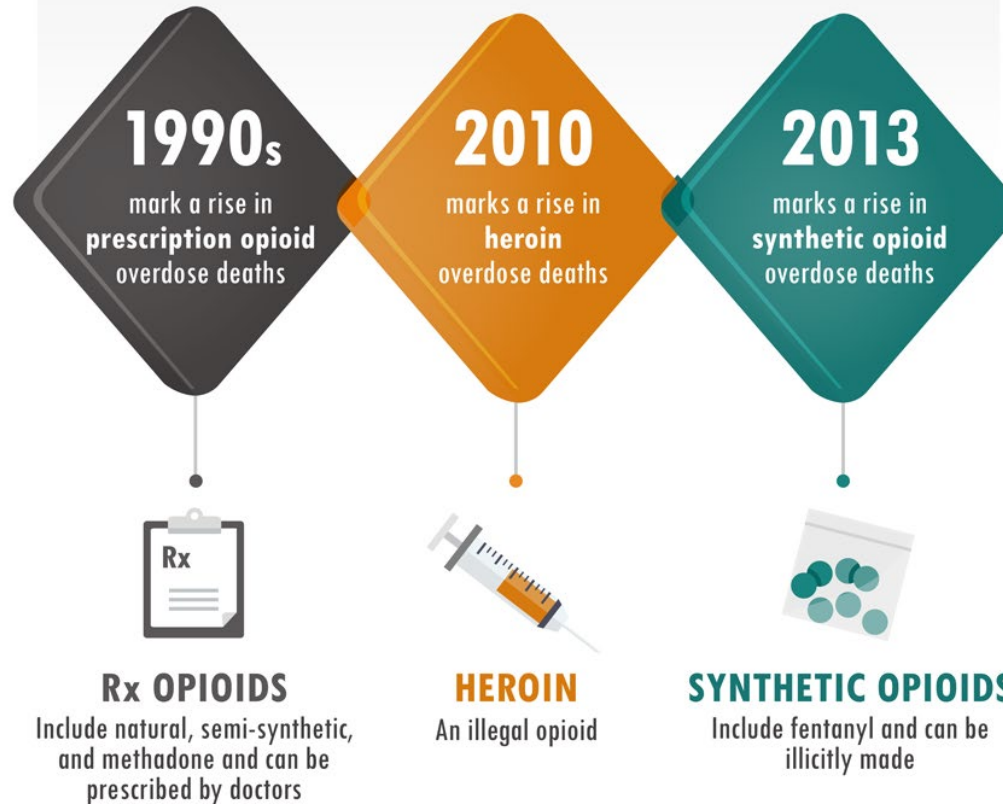
David Metzger, PhD  
Cecile Denis, PhD

HIV Prevention Research Division  
University of Pennsylvania  
Department of Psychiatry  
3535 Market Street  
[dsm@penmedicine.upenn.edu](mailto:dsm@penmedicine.upenn.edu)

# RISE IN OPIOID OVERDOSE DEATHS IN AMERICA

## A Multi-Layered Problem in Three Distinct Waves

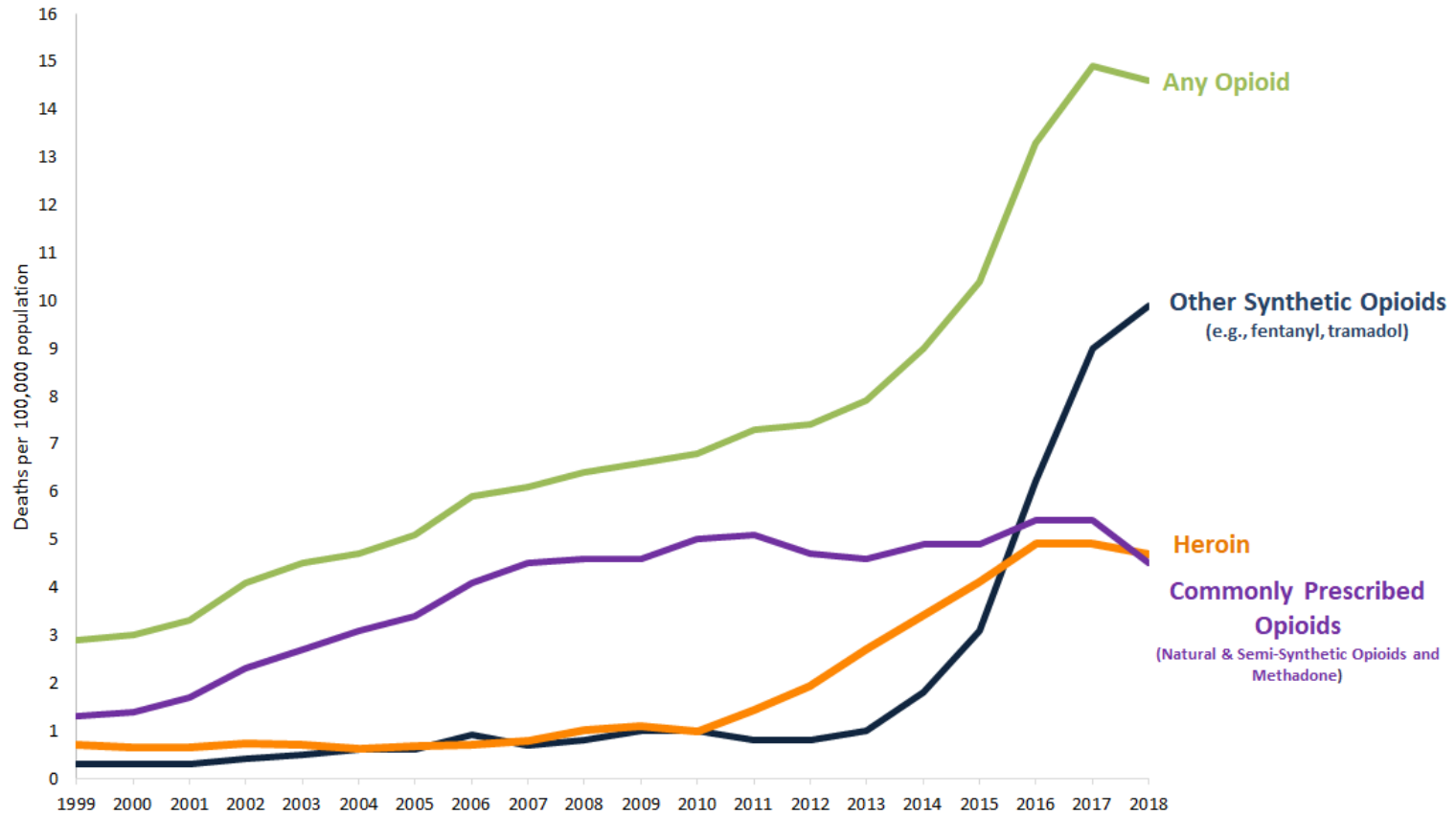
Nearly **450,000** people died  
from an opioid overdose (1999-2018)



Learn more about the evolving opioid overdose crisis: [www.cdc.gov/drugoverdose](http://www.cdc.gov/drugoverdose)

Opioids were involved in nearly 47,000 deaths in 2018, which is nearly six times the number of opioid-involved overdose deaths in 1999.

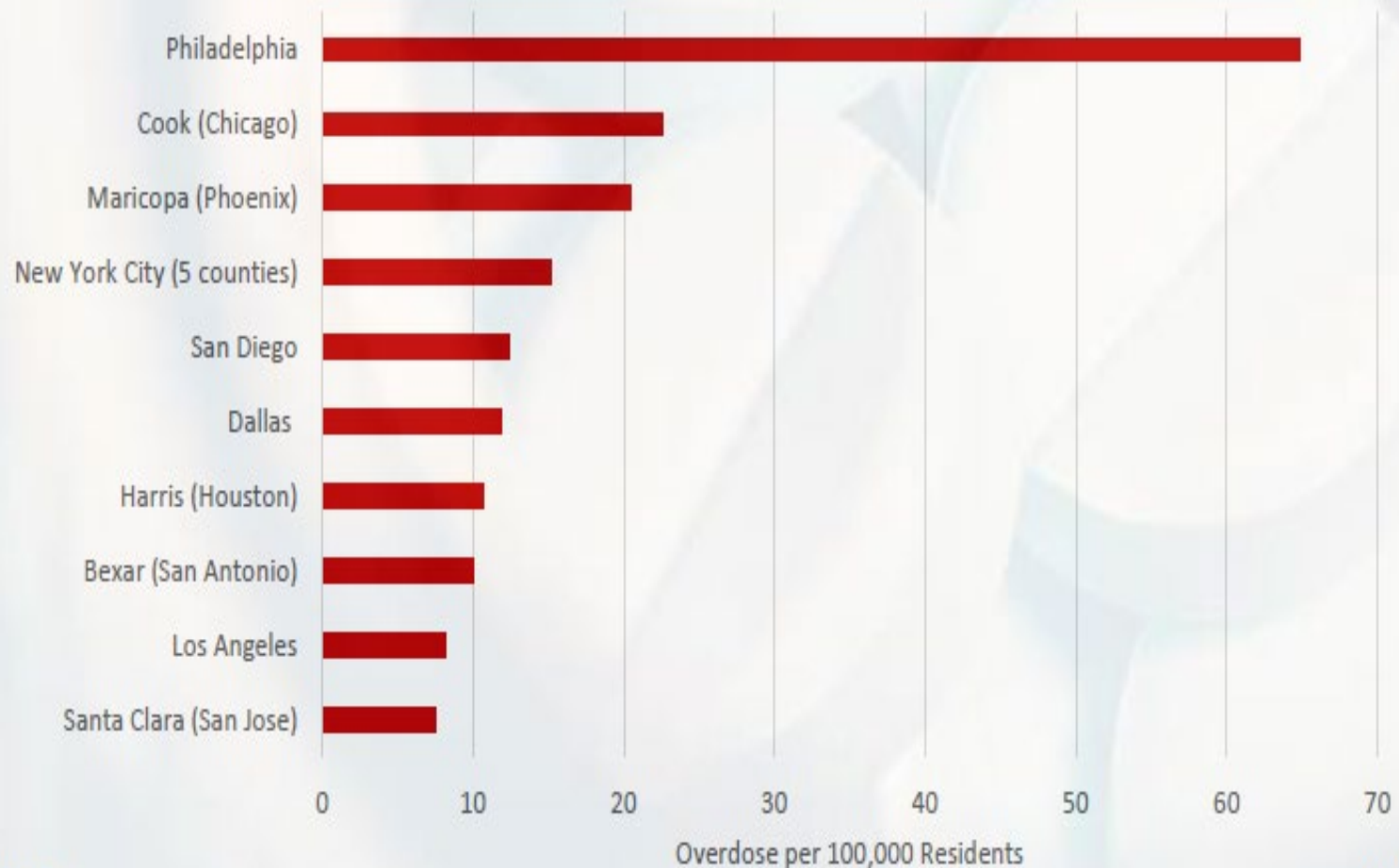
**Overdose Death Rates Involving Opioids, by Type, United States, 1999-2018**



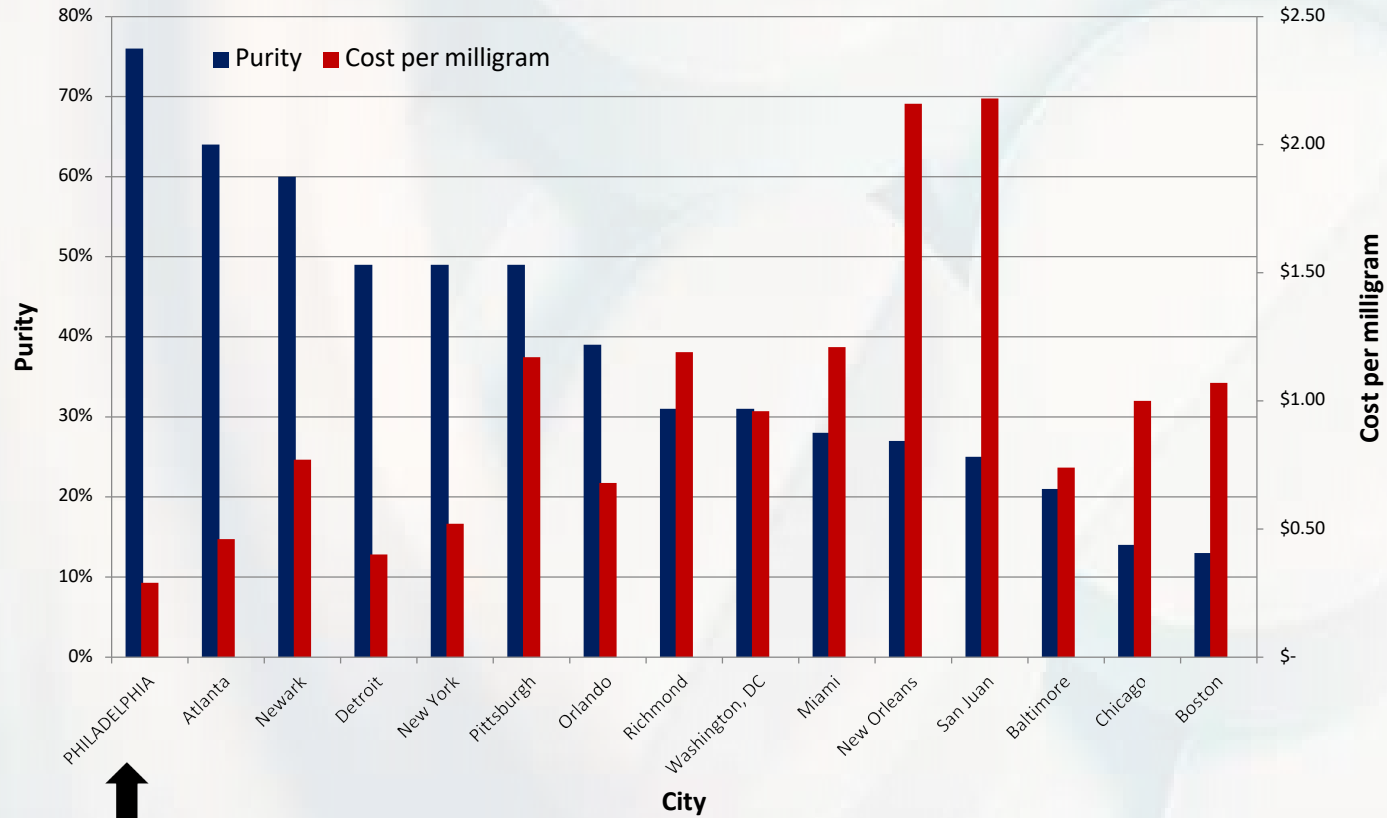
SOURCE: CDC/NCHS, National Vital Statistics System, Mortality. CDC WONDER, Atlanta, GA: US Department of Health and Human Services, CDC; 2020.  
<https://wonder.cdc.gov/>.

# Philadelphia has the highest death rate of the top 10 largest U.S. cities

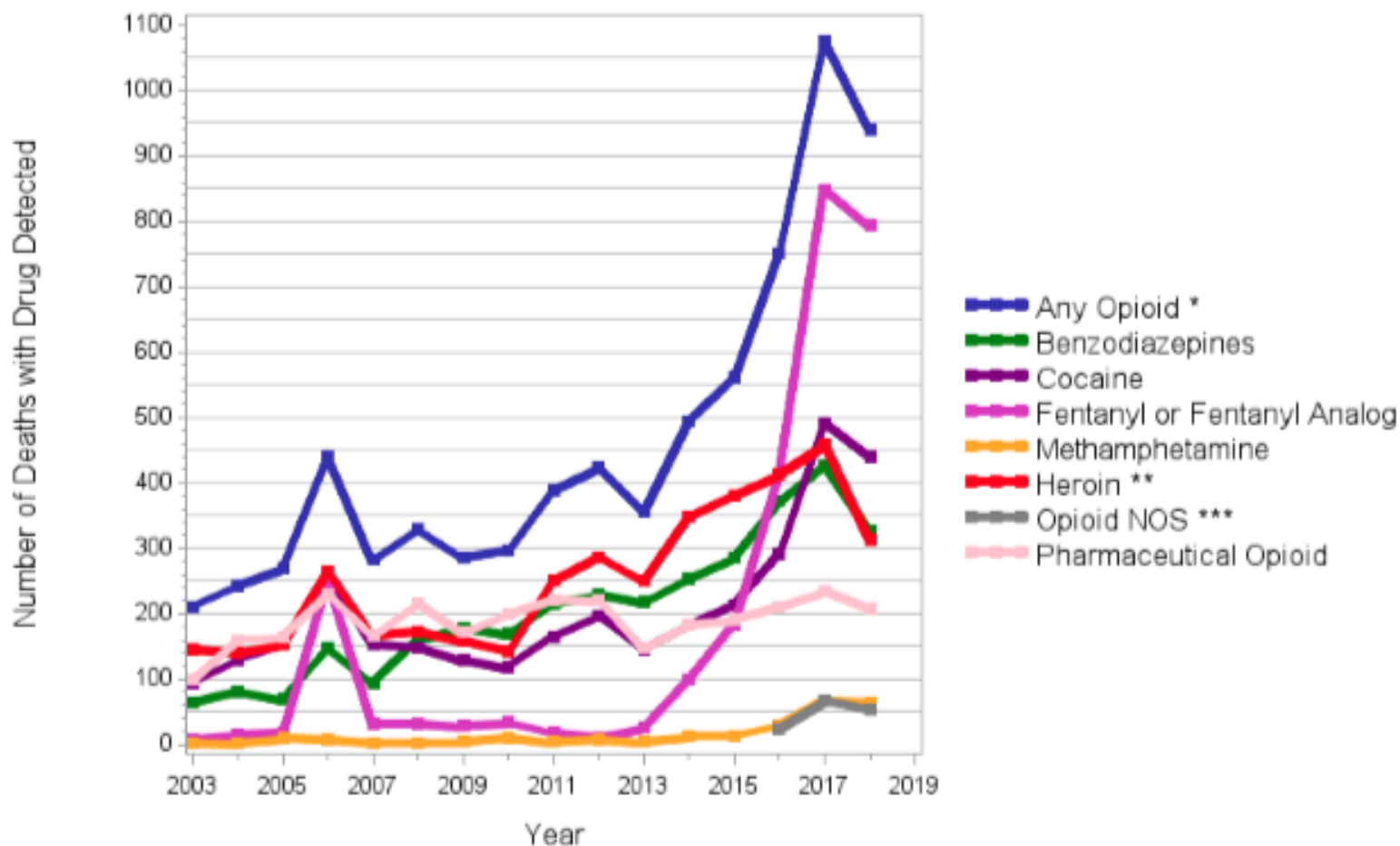
Drug Overdose Rates in Counties Associated with 10 Largest U.S. Cities



# Heroin is pure and cheap in Philadelphia



## Number of Opioid Related Deaths with Specific Drug Present, 2003-2018



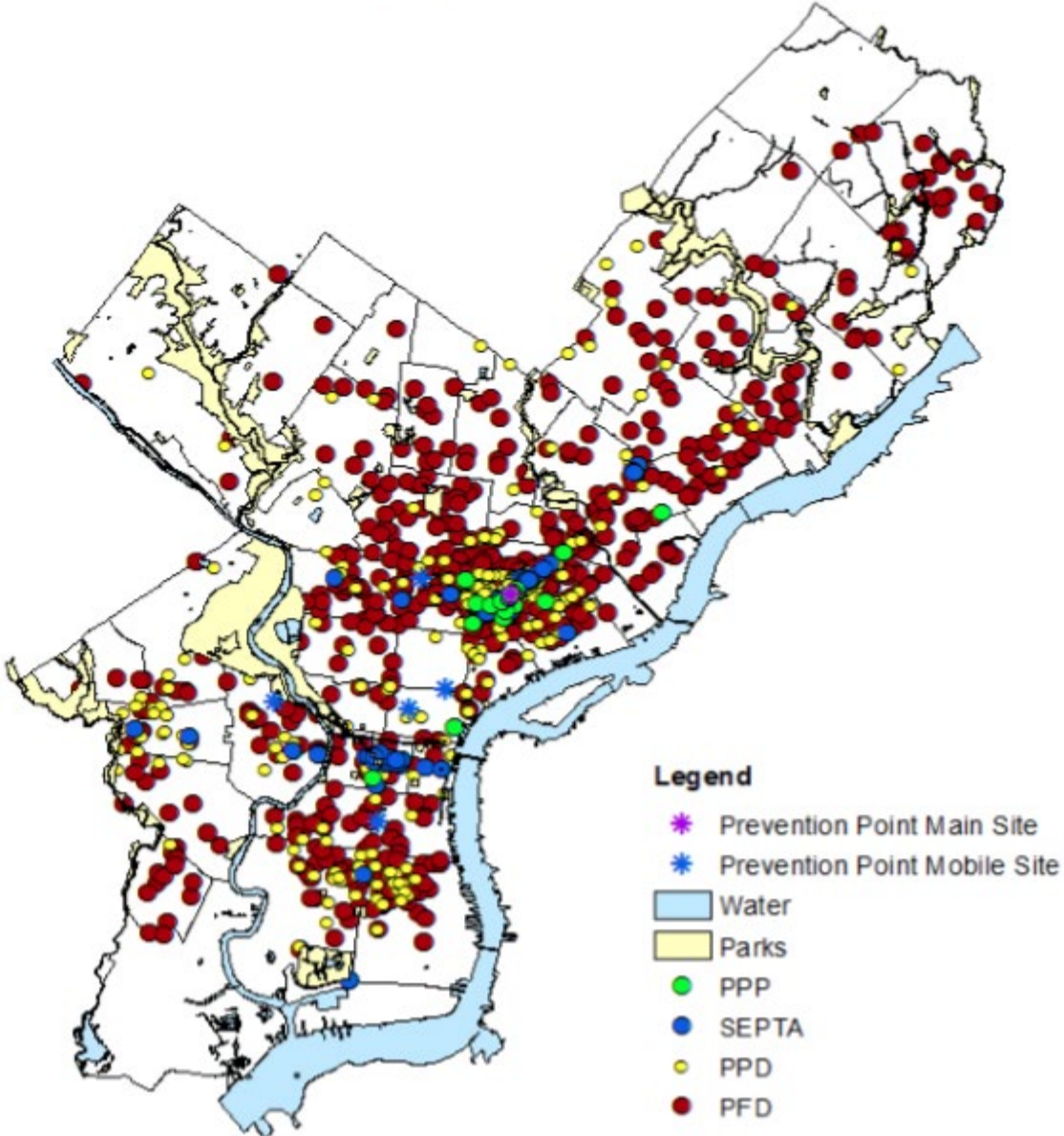
\* Includes deaths with any opioid including heroin, morphine, or pharmaceutical

\*\* Includes deaths with heroin or morphine detected

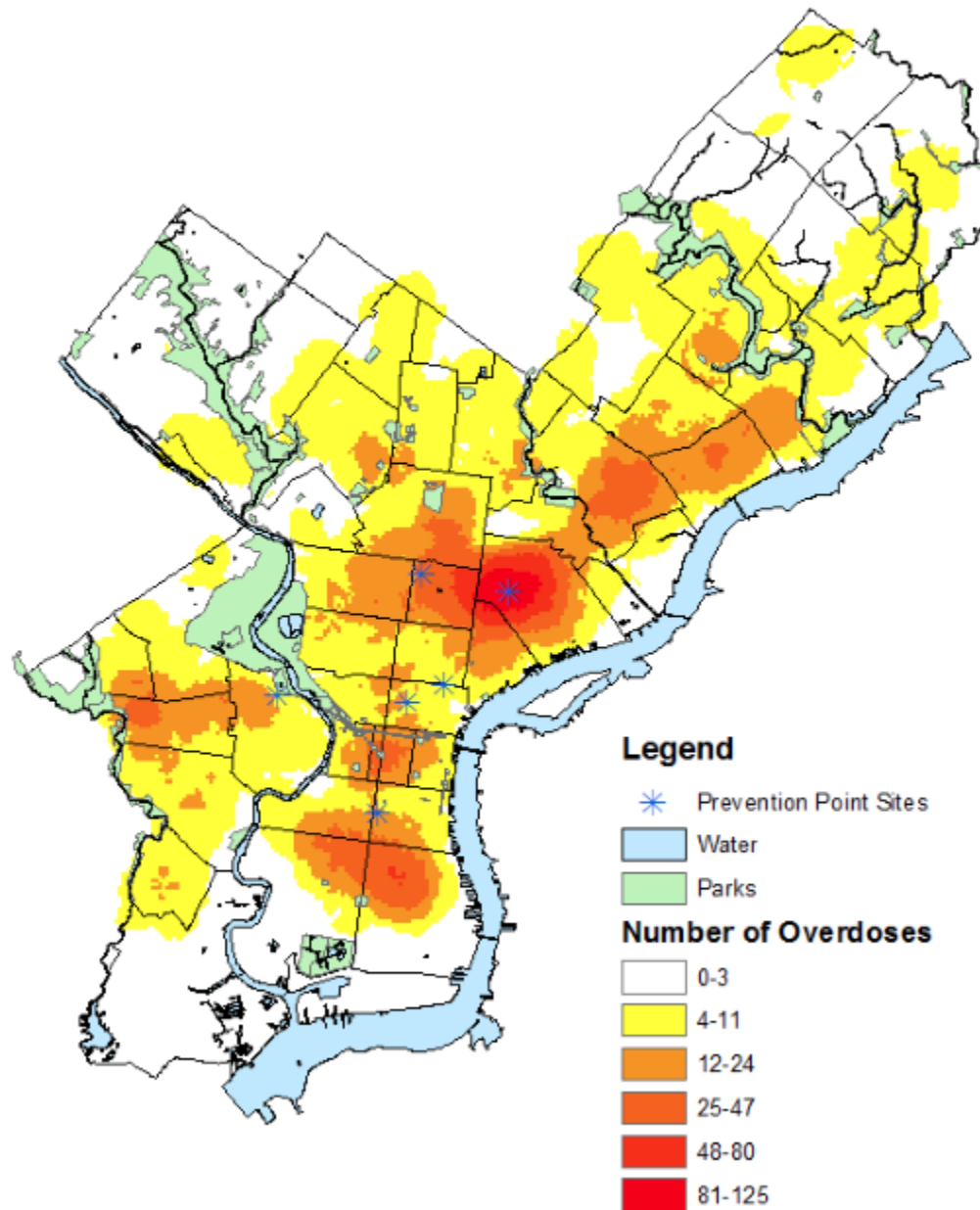
\*\*\* Includes deaths based on hospital tox

\*\*\*\* Categories are not mutually exclusive as multiple drugs might be detected in the system

# Incidence of Non-Fatal Overdoses in Philadelphia by Zip Code, 2018



# Unintentional Drug-Related Fatal Overdoses by Incidence, 2018





# Demographics of Unintentional Opioid Related Deaths

## Age-Adjusted Rates\* per 100,000 Residents

January 1, 2017- December 31, 2018

	Age-Adjusted Rate per 100,000 residents
<b>Total</b>	49.2
<b>Sex</b>	
Female	25.9
Male	75.5
<b>Race/Ethnicity**</b>	
White, non-Hispanic	75.4
Black, non-Hispanic	32.8
Hispanic	58.3
<b>Age***</b>	
15-24	14.1
25-34	63.1
35-44	96.2
45-54	103.0
≥55	47.1

\* Rates are calculated using Philadelphia county population denominators from the 2017 American Community Survey 1-year estimates. Rates are adjusted to the 2000 U.S. Standard Population age distribution

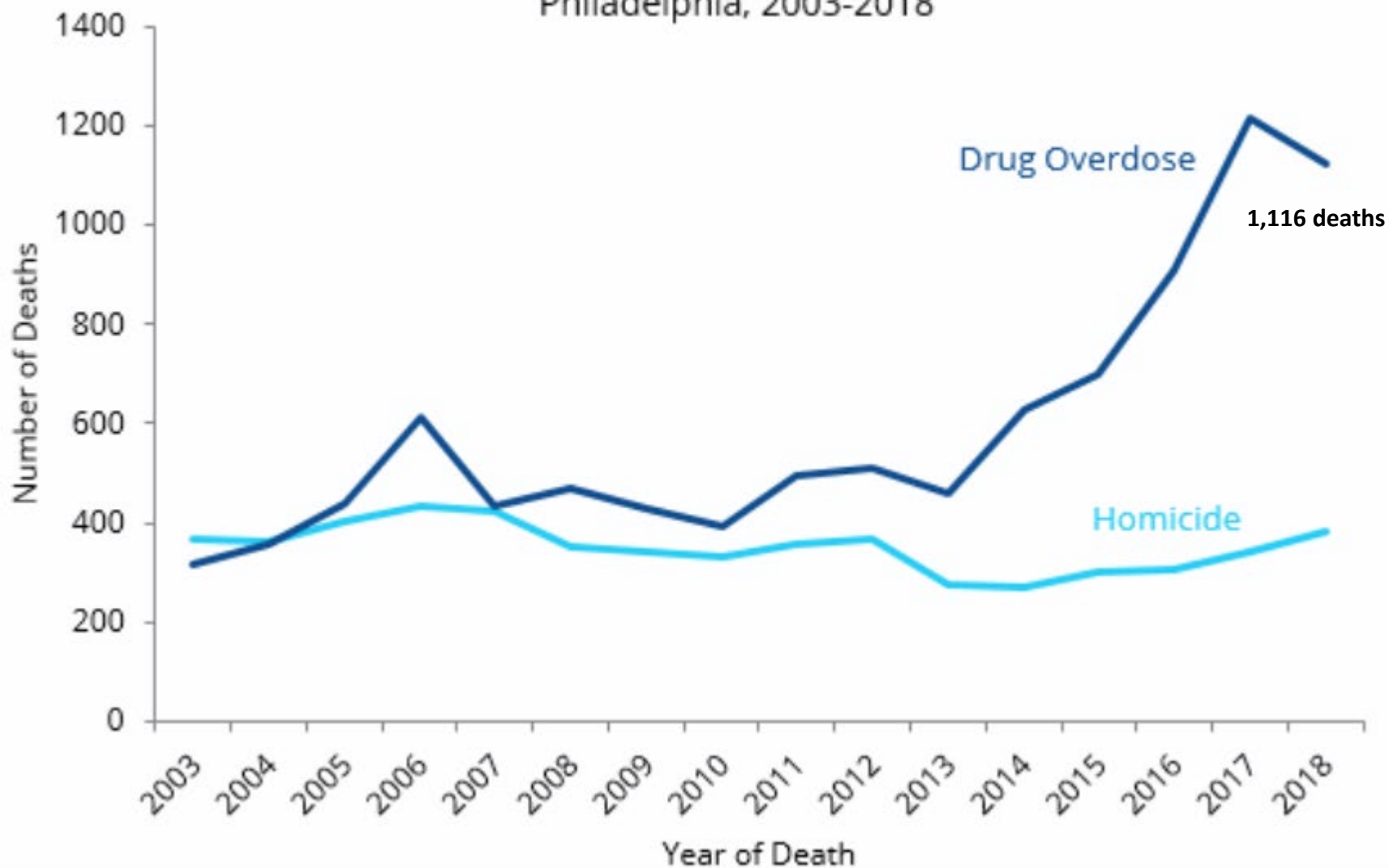
\*\* Deaths among persons who had race/ethnicity listed as other were too few to calculate rates

\*\*\* Age-specific death rates are listed

## Drug overdoses declined 8% in 2018

### Drug Overdose Deaths and Homicides

Philadelphia, 2003-2018



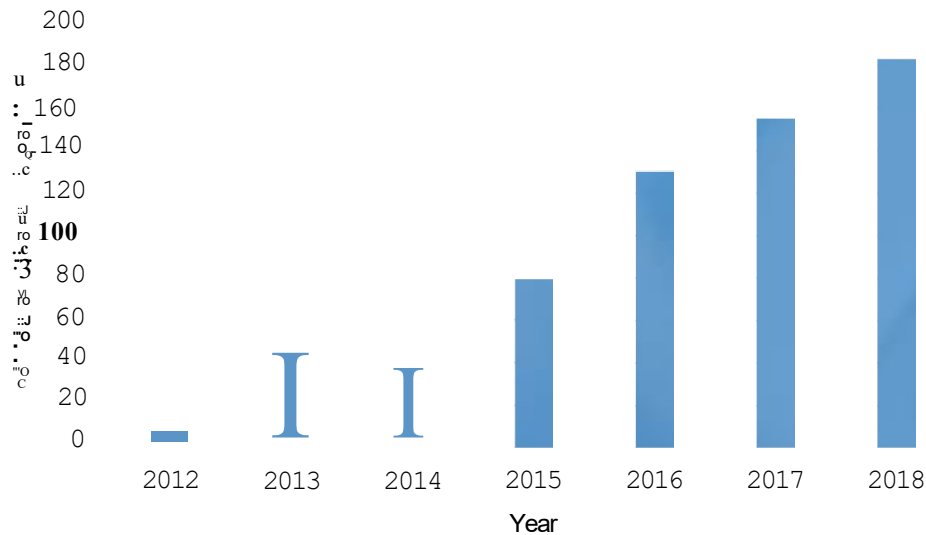
An iceberg floating in the ocean under a bright sun. The small tip above the water is labeled with the number of fatal overdoses, while the much larger submerged part is labeled with the estimated number of people with opioid use disorder. The background shows a clear blue sky with some clouds and a calm sea.

**993 fatal opioid overdoses**

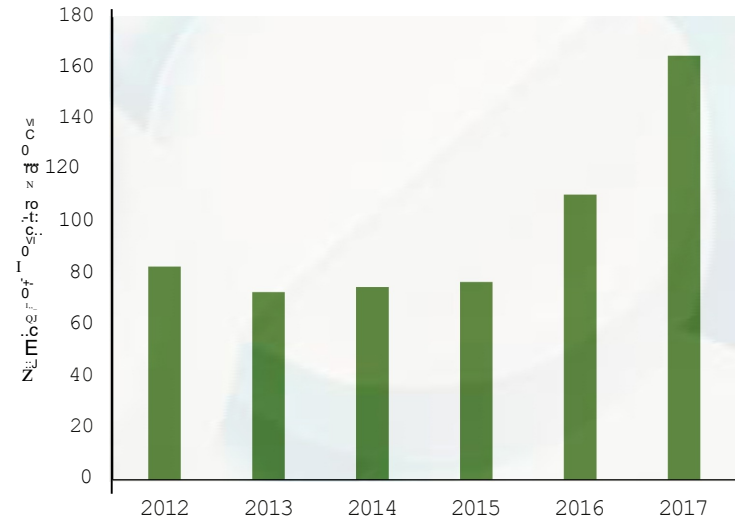
**Opioid Use Disorder  
in Philadelphia:  
120,000 (est.)**

# Increasing hepatitis C and endocarditis as well

Acute cases of hepatitis C reported to PDPH, 2012-2018

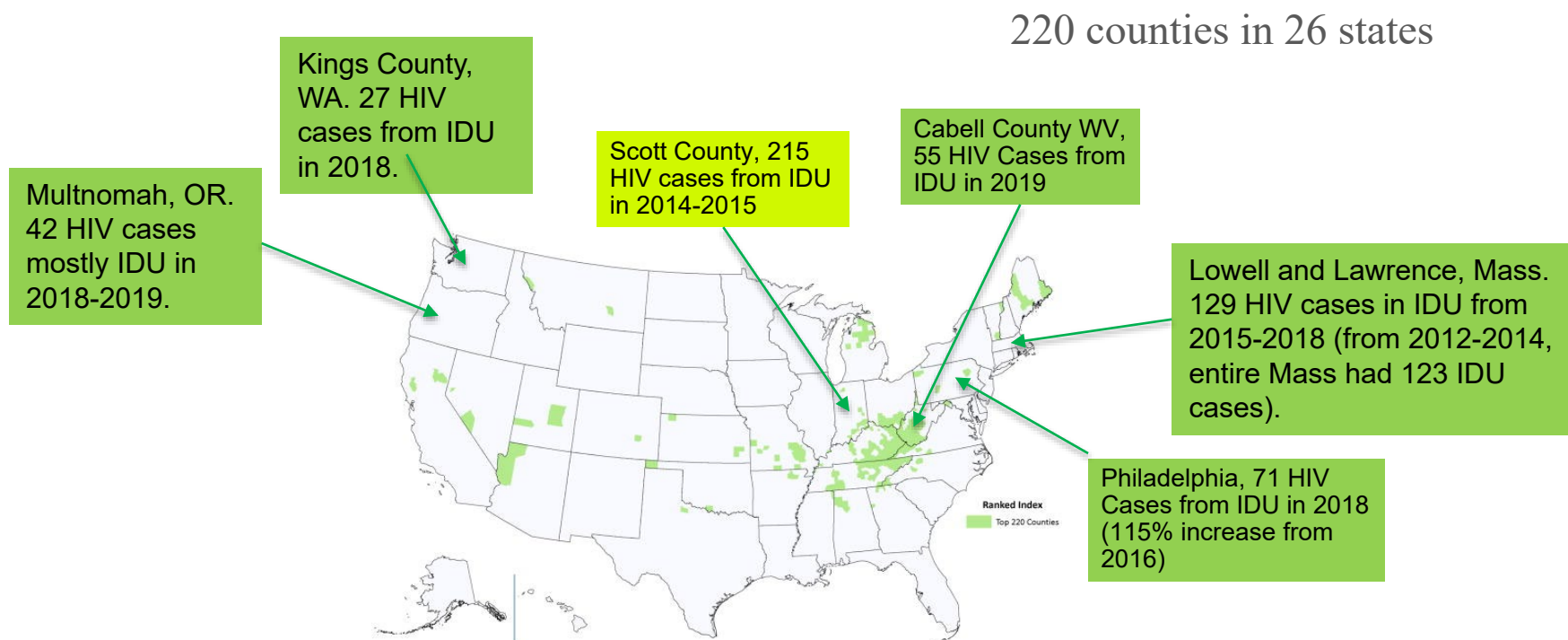


Hospitalizations for Endocarditis Among People with Opioid Use Disorder by Year



# HIV Can Spread Rapidly Among People Who Inject Drugs

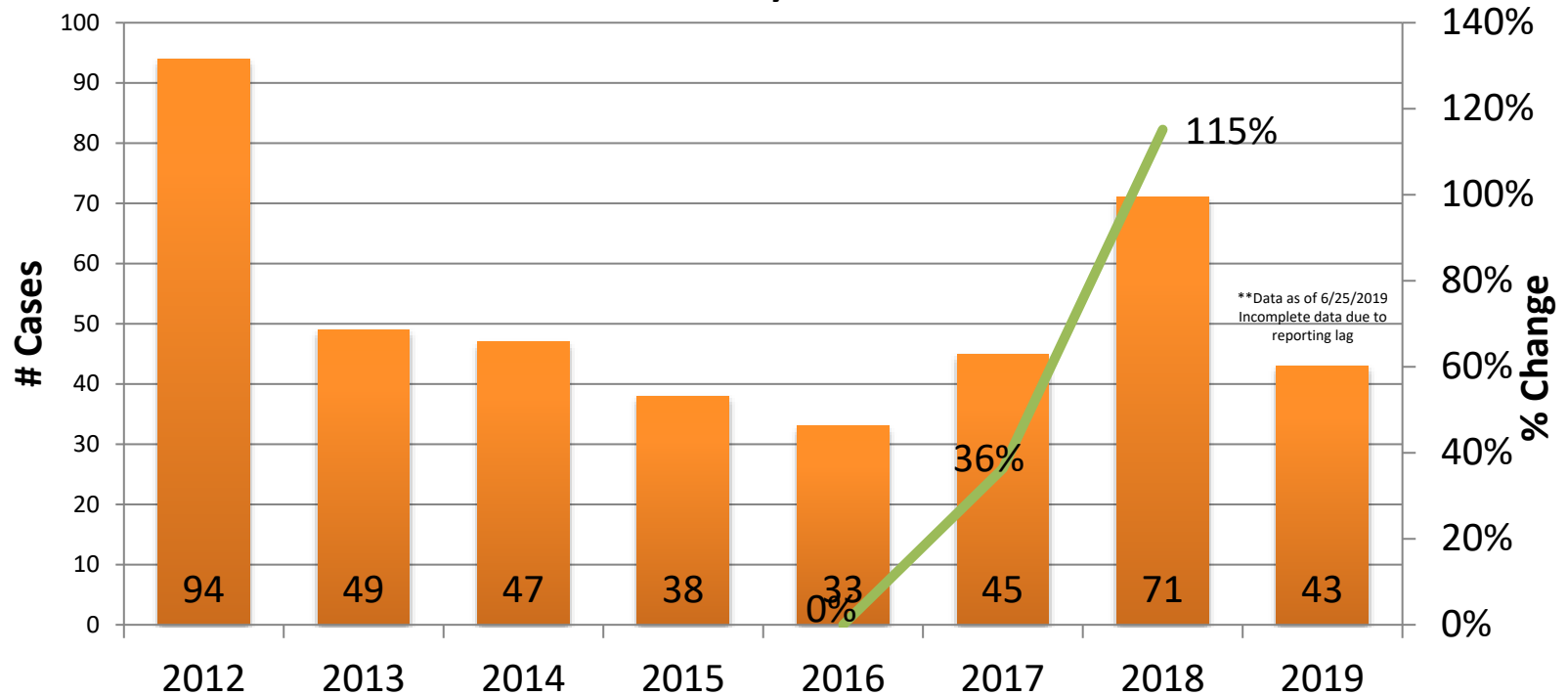
U.S. counties vulnerable to rapid spread of IDU-associated HIV





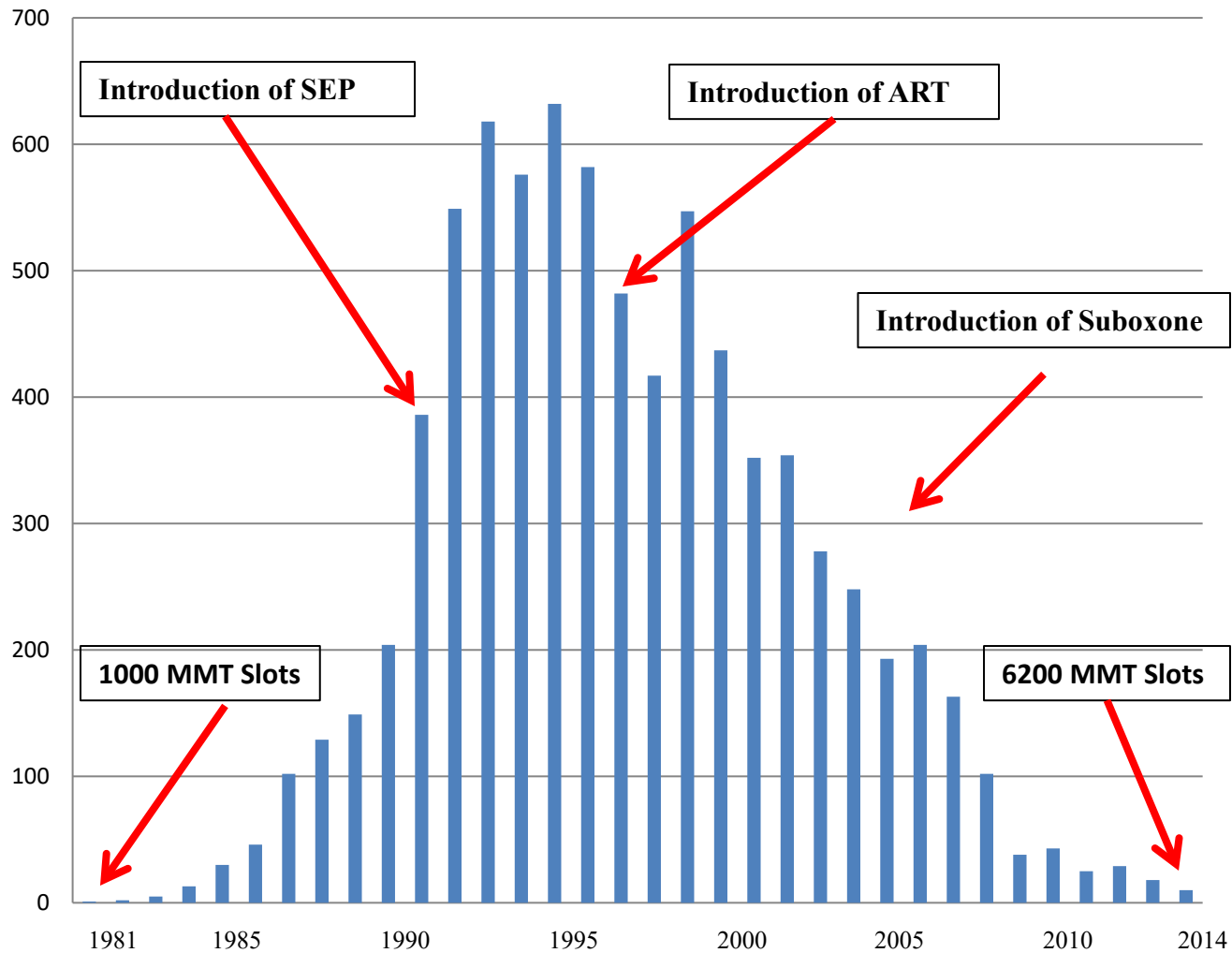
# Identifying an Outbreak

Number of Newly Diagnosed Cases of HIV (regardless of AIDS status) in all PWID, by Year



# Number of new HIV/AIDS diagnoses among IDUs in Philadelphia by year: 1981 to 2014

---



# PMARC Pilot assessments of 143 PWID

---

HIV positive: 12 (8.4%)

○ Detectable VL: 7 (58.3%)

Severe DSM 5 OUD: 132 (92.8%)

OD past 6 months: 41 (32.3%)

MAT past 30 days: 46 (36.5%)

Depression:

Severe/Very Severe 57 (40%)



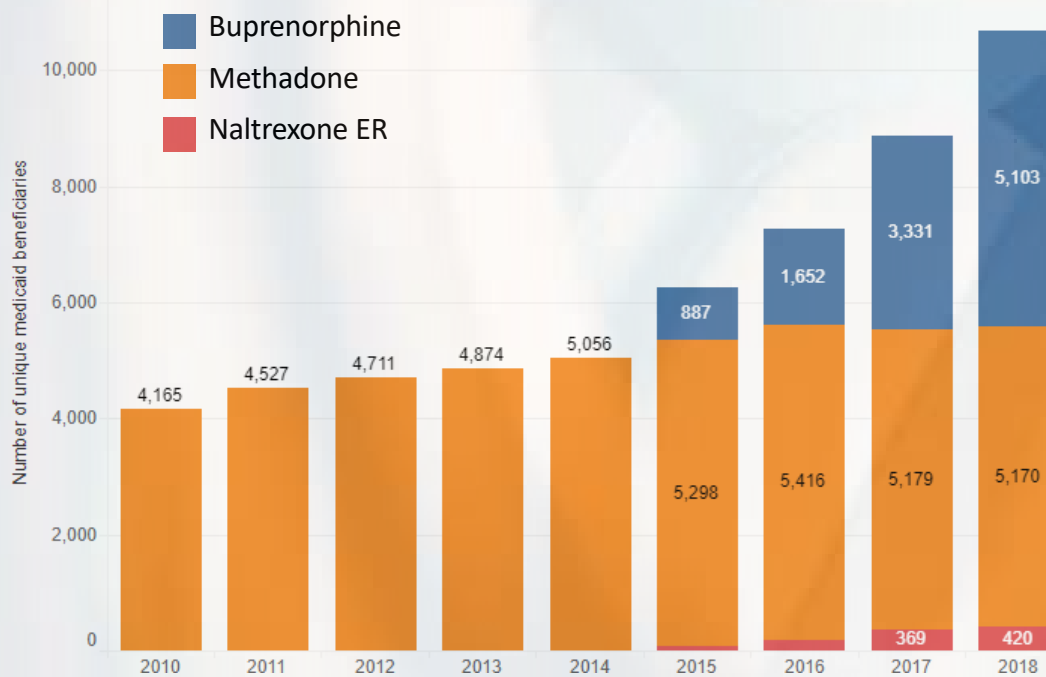
# City's Encampment Resolution Project

---



# Treatment

Number of unique beneficiaries receiving medication assisted treatment by year



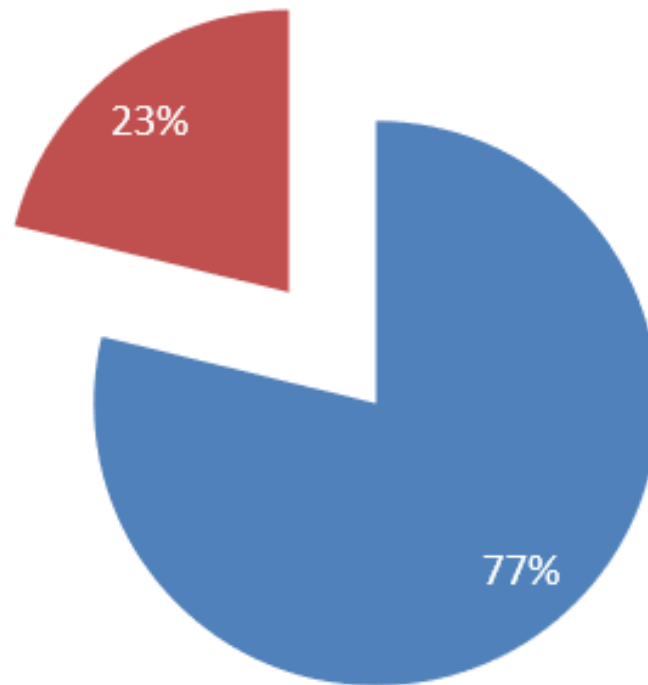
**I AM LIVING PROOF  
THAT BUPE WORKS.**

For help, call 888-545-2600 or visit [BupeWorks.org](http://BupeWorks.org)  
Buprenorphine medication helps people stop using heroin and other opioid drugs.

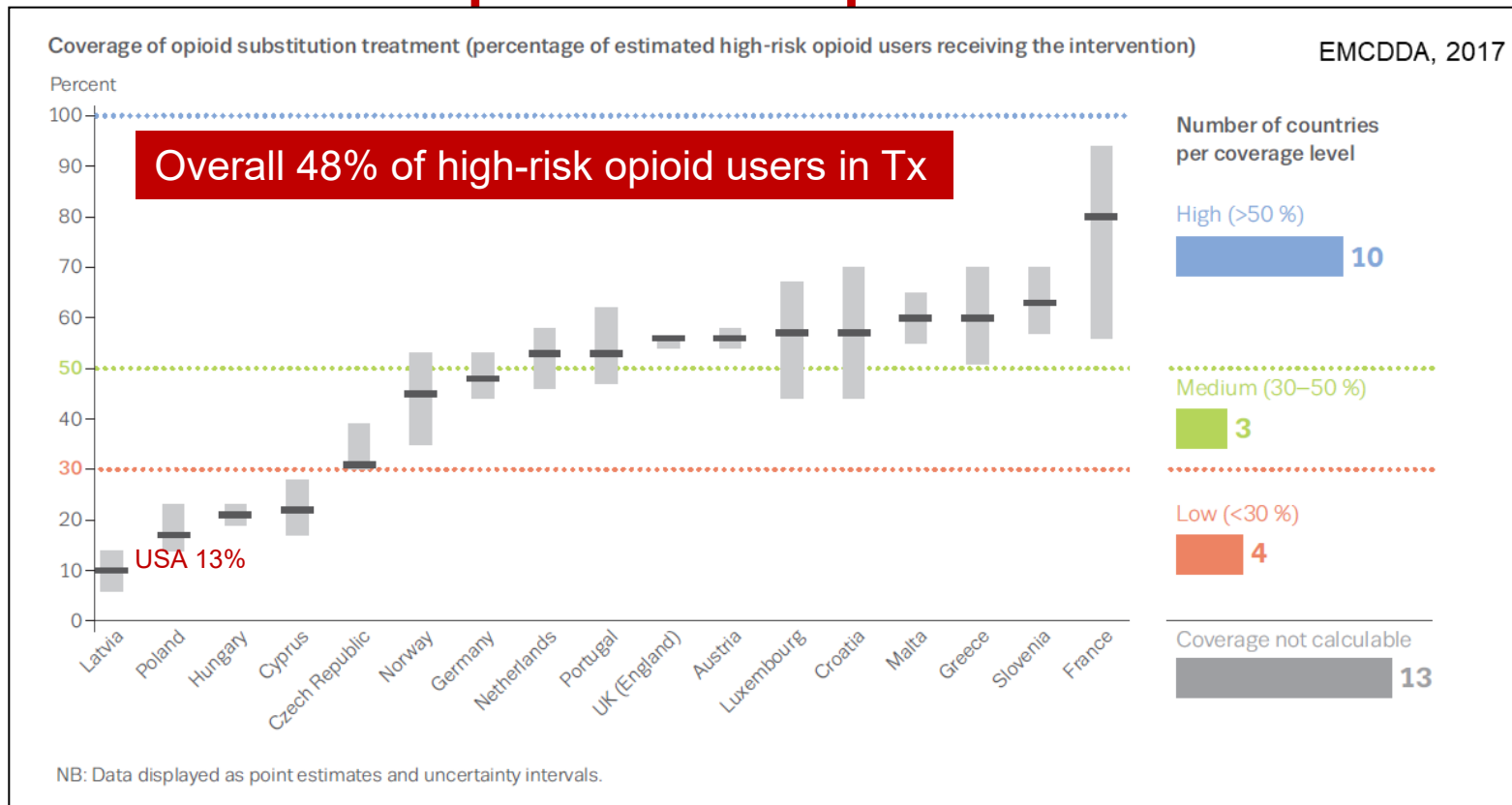
# Philadelphia DBHIDS In-Network Medication Assisted Treatment Capacity, as of 12/28/2018

■ In use ■ Available

Total DBHIDS In-Network  
MAT Program Capacity  
(any medication) =  
**12,479** slots.



# Maintenance treatment opioid dependent patients



# Rapid Initiation of buprenorphine/naloxone to optimize MAT in Philadelphia

**RIDE**

---

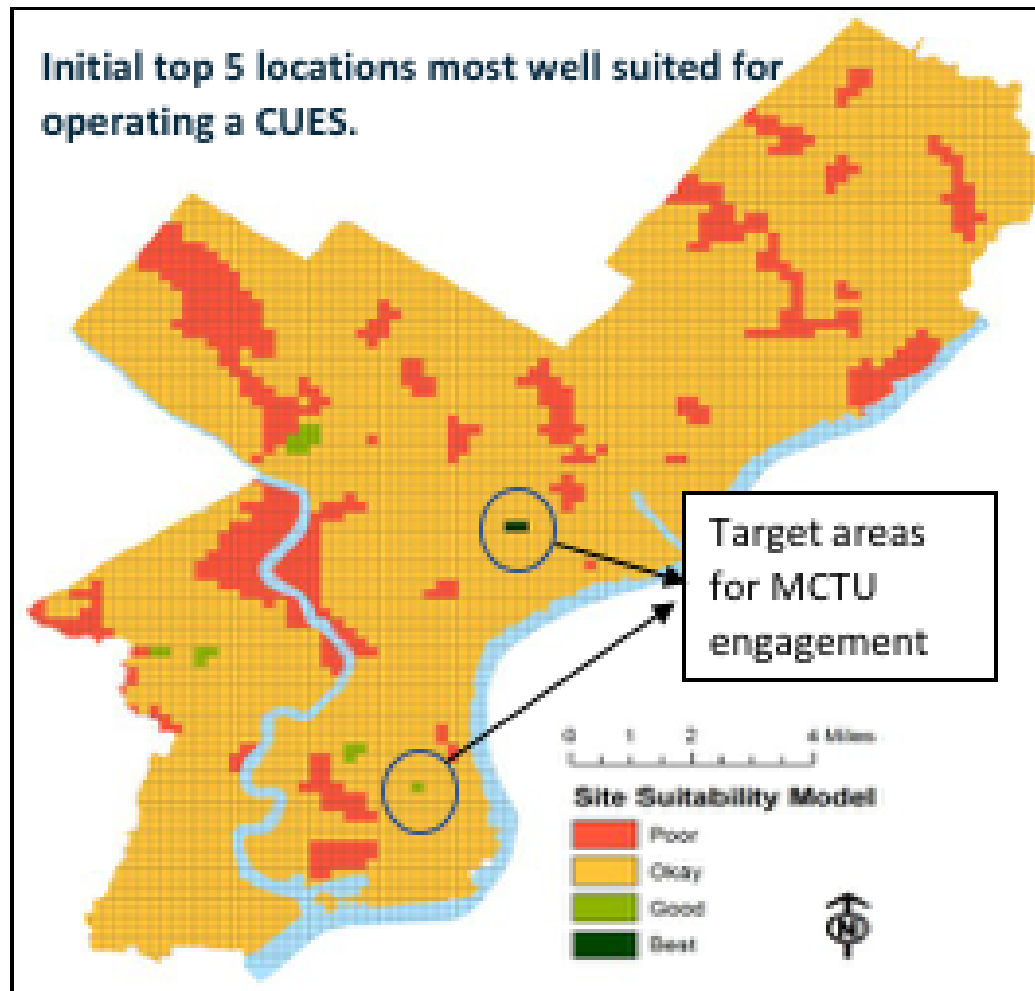


# RIDE Strategy

---

- **Mobile**
- **Rapid relief of withdrawal symptoms**
- **Preferred Provider Network**
- **Support**
  - **Nurse practitioner**
  - **Case manager**
  - **Peer recovery specialist**

# Targeted Neighborhoods



# Conclusions

---

- **Philadelphia is experiencing a severe opioid epidemic**
- **New strategies are needed for HIV prevention**
- **MAT engagement remains challenging**